



E ERECTA STEP®

Portable Series - OSHA



OWNER'S MANUAL

Portable Series - OSHA

PORTABLE PLATFORM SYSTEM



WARNING! READ CAREFULLY AND UNDERSTAND ALL INSTRUCTIONS BEFORE STARTING INSTALLATION. FAILURE TO FOLLOW ALL INSTRUCTIONS MAY RESULT IN DEATH OR SERIOUS PERSONAL INJURY.

IMPORTANT

- Equipment should not be altered or modified from its original design without consultation with the manufacturer.
- Equipment which is damaged or becomes damaged during use, handling, or shipping should be set aside and not used.



- **WARNING!** Failure to anchor unit properly with the correct layout dimensions can result in product damage not covered under warranty – units 42” and taller are not designed to be self supported without anchor bolts. Failure to secure all fasteners may result in death or serious personal injury.
- Do not assemble unit off of anchor bolts and then lift onto them. System should only be assembled in its final location. Never move an assembled system.



- **WARNING!** Handrail mount angles must be used where designated in the instruction manual. Failure to use handrail mount angles where designated may cause equipment to fail and may result in death or serious personal injury.
- **TORQUE DATA:**
All ½” bolted connections = 678 in-lbs. (56 ft-lbs.) lubricated or 904 in-lbs. (75 ft-lbs.) dry +/-10%.
For 5/8” anchor bolts = 900 in-lbs. (75 ft-lbs.) lubricated or 1080 in-lbs. (90 ft-lbs.) dry +/-10%.
Use of impact wrenches NOT sanctioned.



- **WARNING!** After a usage period of 60-90 days, check all fasteners to ensure connections are secure. Periodic inspection is recommended to insure all fasteners are secured. Failure to secure all fasteners may result in death or serious personal injury.

PORTABLE PLATFORM SYSTEM

ASSEMBLY CRITERIA

Verify proper installation according to ErectASStep – Portable Series installation manual. In addition, make sure to check the following specifically.

- Ensure all anchor bolts are installed properly at the stair base and supports.
- Ensure supports are vertically plumb.
- Ensure platform and steps are level.
- Ensure all bolts are properly tightened according to ErectASStep – Portable Series installation manual.
 - No impact wrenches are to be used – tighten all bolts manually with wrench.

PORTABLE SERIES PLATFORM SYSTEM



Thank you for purchasing an ErectAStep Portable Series Metal Stair Unit!

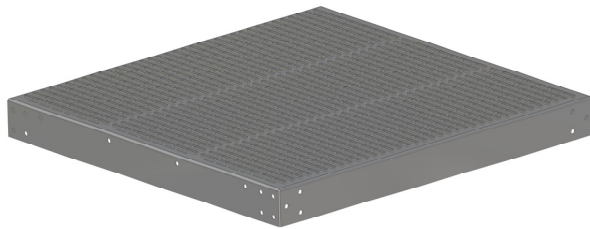
Your new ErectAStep stair unit has been manufactured using the latest technologies, along with only the highest quality materials to ensure dependable service for years to come.

Please take care, to follow all configuration guidelines and installation instructions to ensure your new Stair unit performs as designed. Please note: design limitations can exist with respect to required supports, adequate footings, and the prescribed application. Please seek the help of licensed professional engineer if further support and/or foundation requirements are in question.

For further questions or concerns, please contact Customer Support at [888.878.1839](tel:888.878.1839)

Thanks again for choosing ErectAStep!

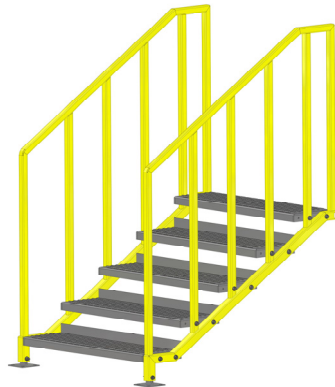
COMPONENTS



PLATFORM



4FT HANDRAIL



STAIR UNIT

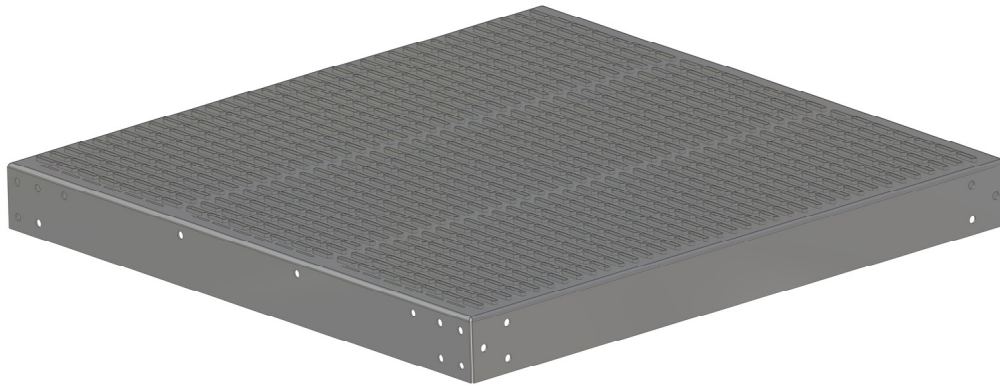


SUPPORTS

- Min 2 people are recommended for assembly.
- Forklifts may be required for assembly.

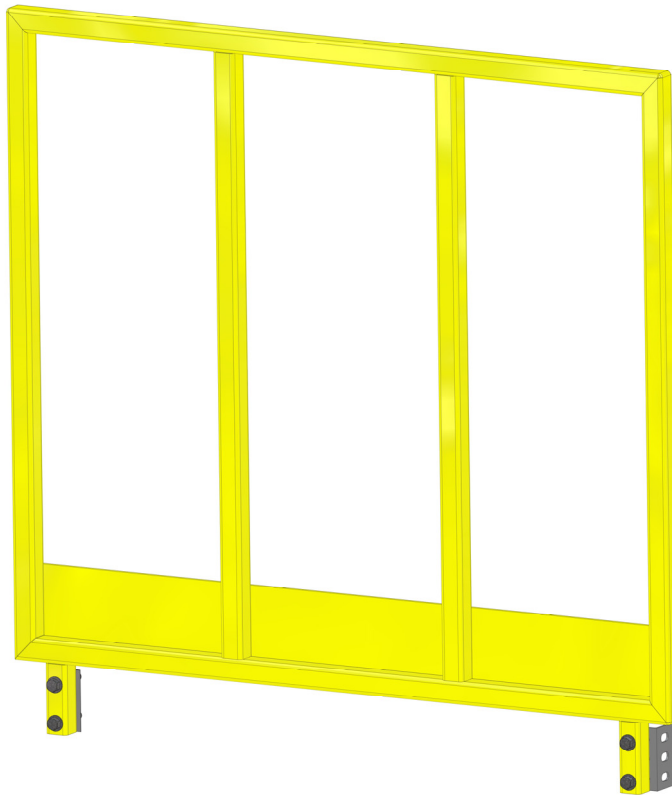
PLATFORM COMPONENT

Platform Order Part Number:
Platform 4 Ft x 4 Ft – Part #90220



PLATFORM

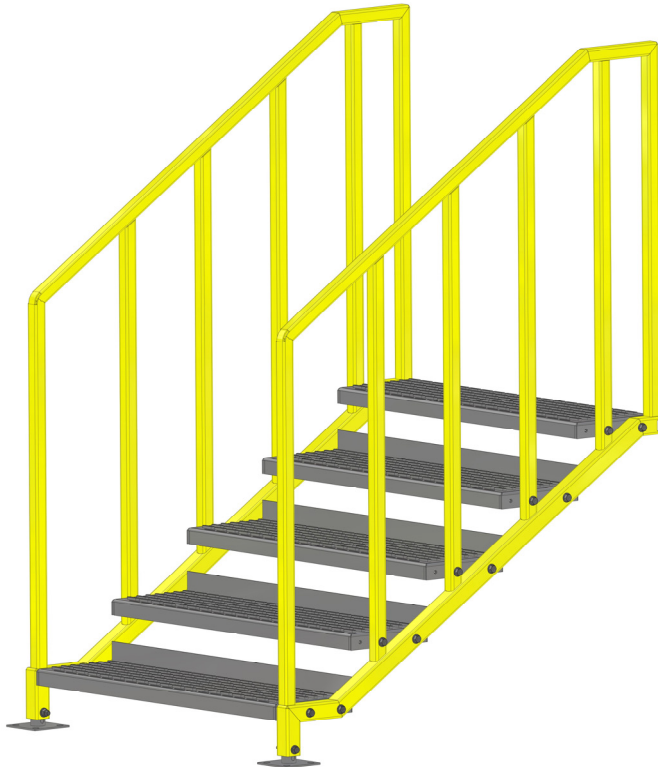
PLATFORM HANDRAIL COMPONENTS



Platform Handrail Order Part Number:
Platform Handrail 4 Ft– Part #90223

PLATFORM HANDRAIL

STAIR COMPONENTS



STAIR UNIT

Stair Unit Order Part Number:

Stair 28" – Part #90226

Stair 35" – Part #90227

Stair 42" – Part #90234

Stair 49" – Part #90235

Stair 56" – Part #90236

Stair 63" – Part #90237

SUPPORT COMPONENTS



SUPPORTS

Portable Support

Order Part Numbers:

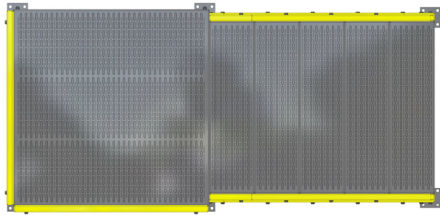
28"/35" – Part #90228 (Set of 4)

42"/49" – Part #90229 (Set of 4)

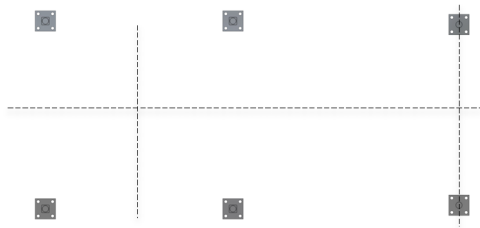
56"/63" – Part #90238 (Set of 4)

Portable Cross Brace- Part #90239
(Required for 56"/63" Supports)

SYSTEM ANCHOR LAYOUT



PLAN VIEW

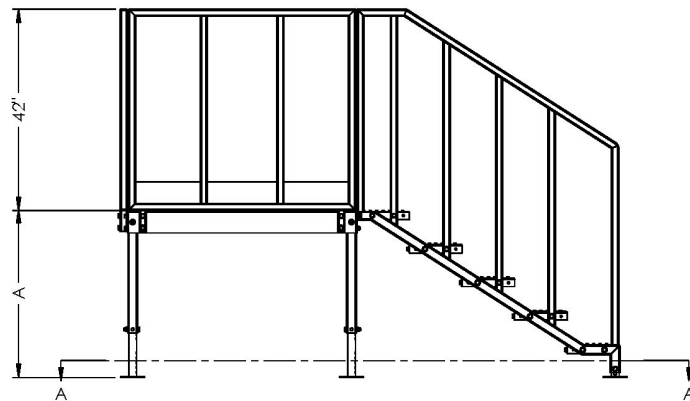


PAD LAYOUT

ANCHOR BOLT POSITION

- **NOTICE – Anchors are required for system 42" and taller. Anchors are optional for systems less than 42".**
- **NOTICE - Do not assemble unit off of anchor bolts and then lift onto them. System should only be assembled in its final location. Never move an assembled system.**
- Anchor bolt positions should be laid out by mathematically calculating positions of anchors. (see component anchor layout)
- Layout area for location of your ErectASStep Portable Series system using measuring tape and chalk lines, keeping anchor lines square and parallel.
- Drill or wet set anchor bolts in the mathematically correct location prior to assembly. Follow any curing procedures recommended by your concrete/anchor bolt supplier.
- Using a level slab/foundation is recommended for anchoring the ErectASStep Portable unit to achieve a good contact point between the bottom of the stairs/supports and the concrete in lieu of utilizing leveling anchors and shims.
- Once pad layout is complete and you are ready to assemble unit, continue with instructions. Assemble unit on anchor bolts starting with supports and platform, then stairs and handrails.

COMPONENT ANCHOR LAYOUT



Stair Unit and Supports

5/8" diameter anchor bolts required for 3/4" diameter holes in base plate.

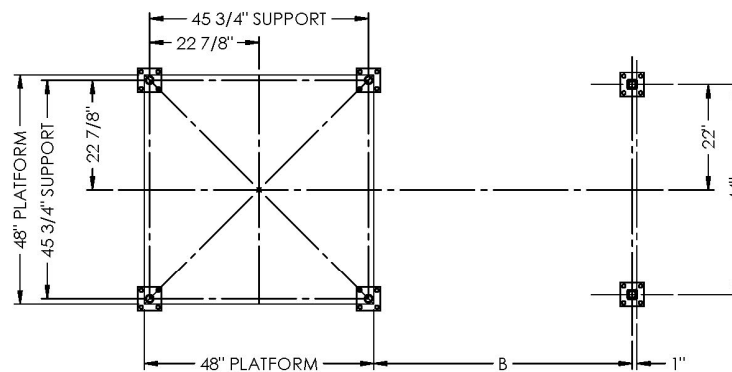
Anchors required for systems 42" and taller.

Anchors are optional for systems less than 42".

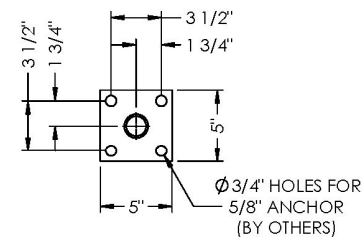
Dimensions:

$A = (\# \text{ of step} \times 7")$

$B = (\# \text{ of step} \times 11") - 1"$

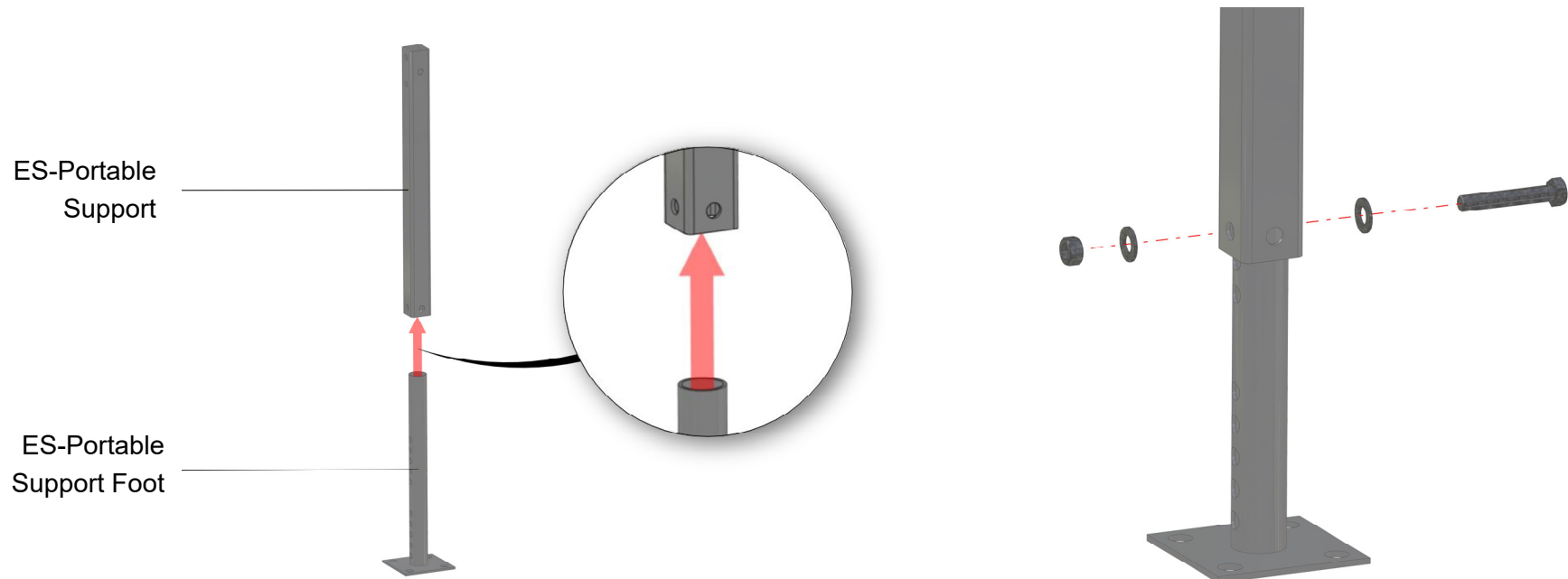


SECTION A-A



FOOT LAYOUT

SUPPORT ASSEMBLY INSTRUCTIONS



STEP 1: Orient components as shown.

NOTE: The support foot slides into the end of the support that has single holes only.

STEP 2: Attach hardware as shown and tighten hardware.

NOTE: Bolt head and nut should be on face of the support tube that has two bolt holes on the opposite end. See picture next page.

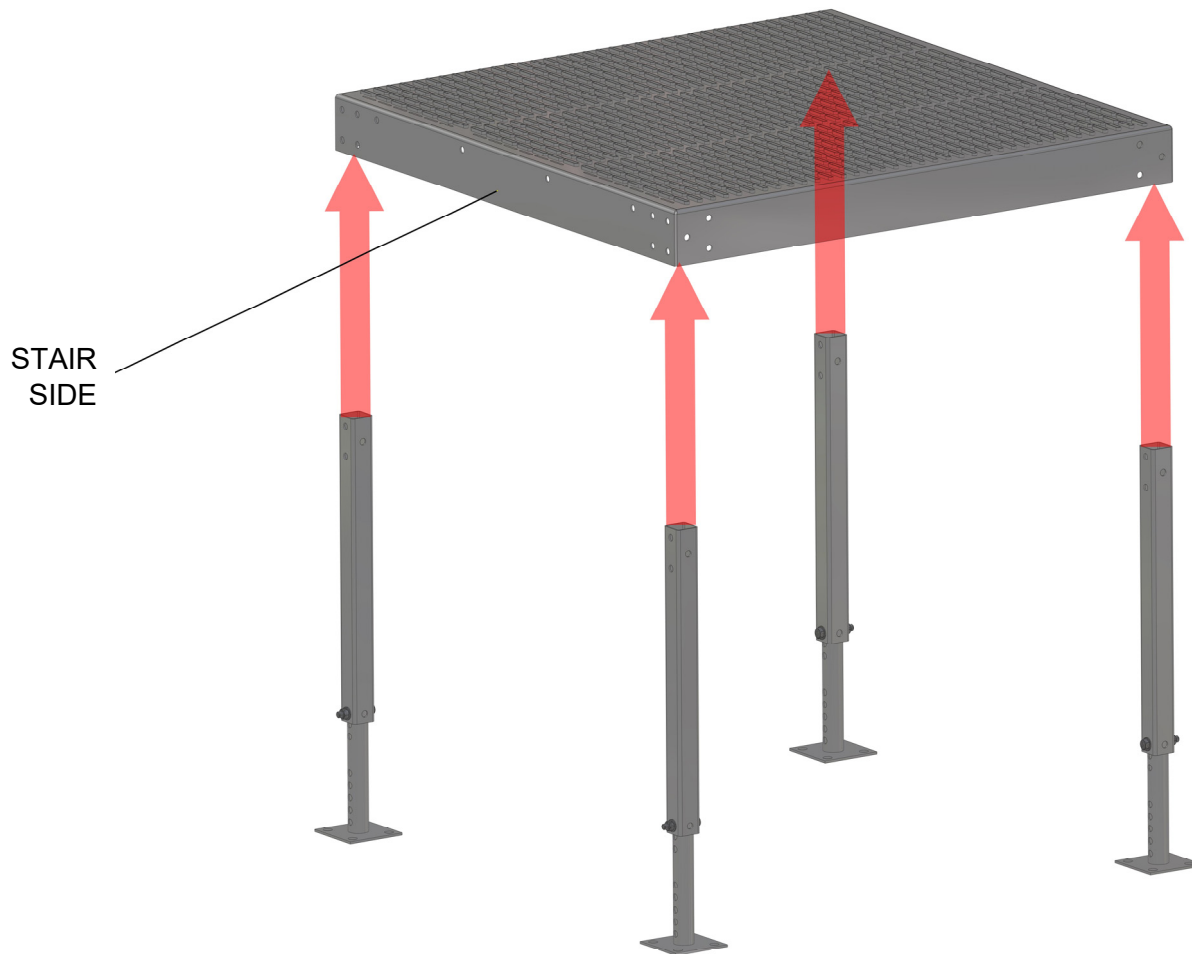
Support Foot has two sets of holes.

Middle hole of lower set is starting position for 28", 42", 56" heights.

Middle hole of upper set is starting position for 35", 49", 63" heights.

Adjust up or down as needed based on ground conditions.

SUPPORT TO PLATFORM INSTRUCTIONS

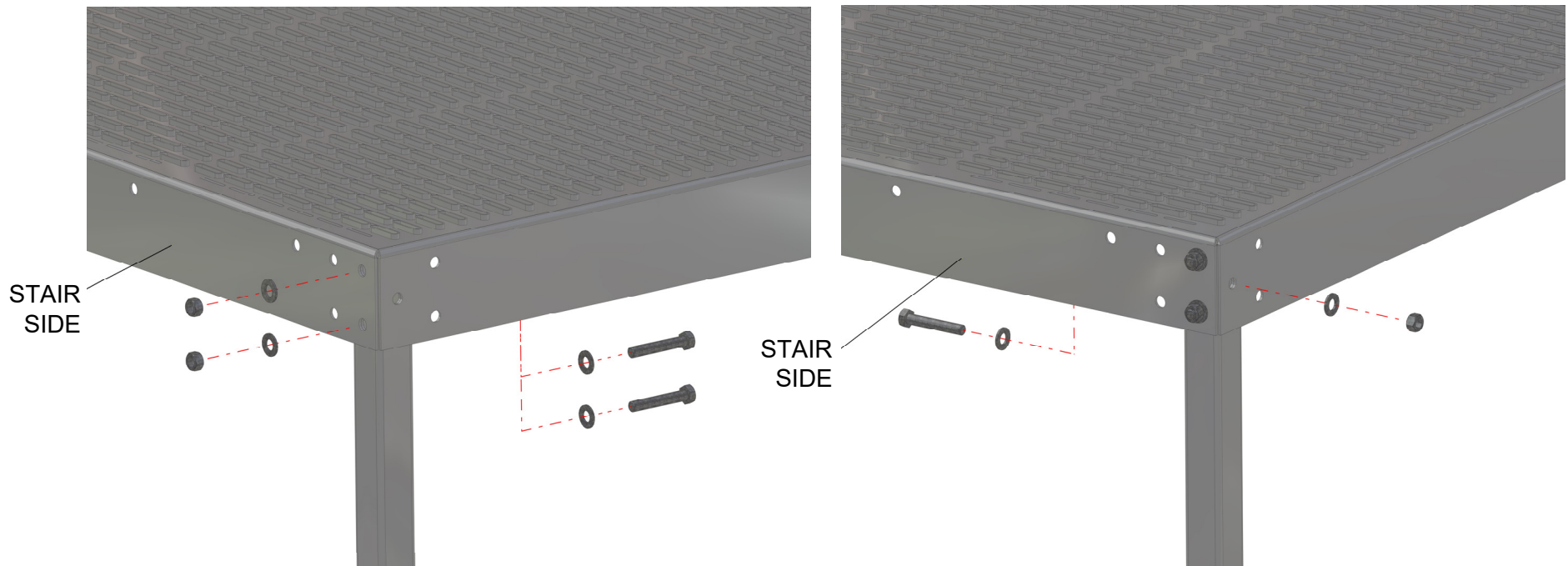


STEP 3: Orient components as shown.

NOTE: Support tubes should be oriented with two holes side facing stair side of platform.

NOTE: If handrails will be used and configuration is known, referencing instruction for handrail attachment at this point could save a couple of steps.

SUPPORT TO PLATFORM INSTRUCTIONS



STEP 4: Attach hardware as shown and tighten hardware. There will be three bolts at each connection.

NOTE: Head of bolts should be on the inside of the platform.

STEP 5: Repeat for steps 4 & 5 for all four supports.

SUPPORT ANGLE BRACES

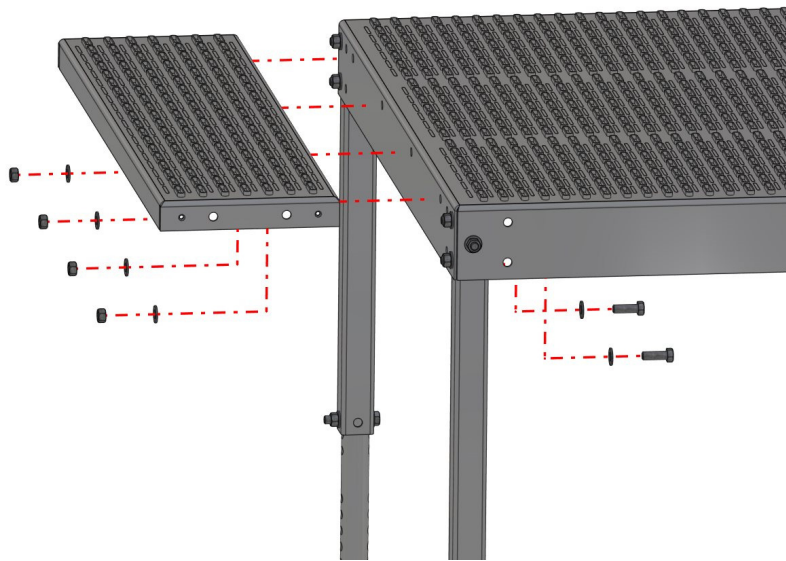


Attach angle braces as shown as required using existing support hardware.

WARNING! Support angle braces are required for 56" and 63" systems. Failure to use support angle braces may cause equipment to fail and may result in death or serious personal injury.

Support Angle Braces
(Required for 56" and 63"
systems).

STAIR TO PLATFORM INSTRUCTIONS



STEP 6: Orient step to platform as shown.

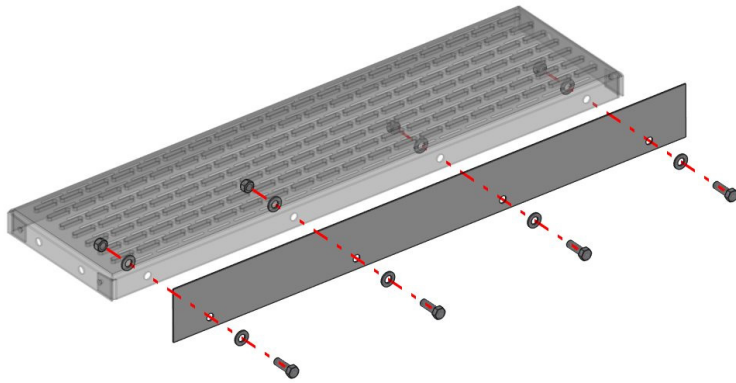
NOTE: Stairs only attach to side of platform with 2 bolts for the supports (see sheet 14.)



STEP 7: Attached hardware as shown and tighten hardware.

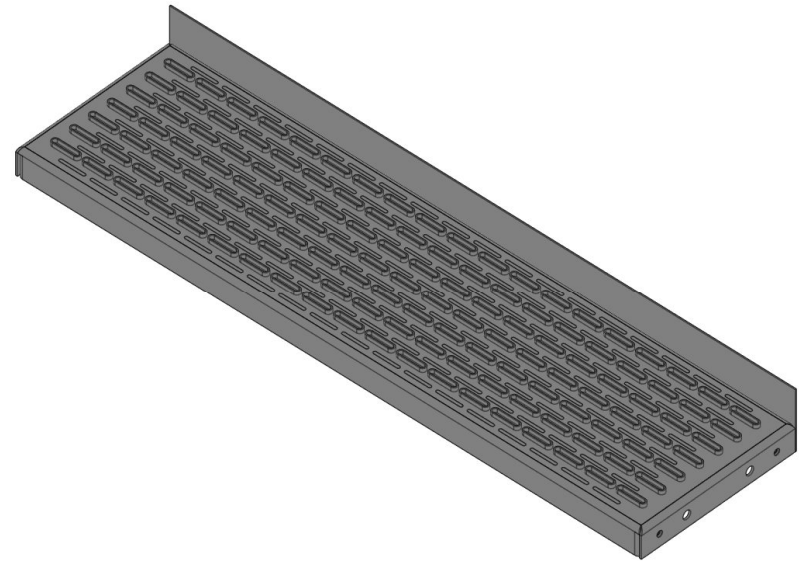
NOTE: This step will not use kick plate, but kick plates are to be used on all other steps (see Sheet 17).

STAIR STEP KICK PLATE INSTRUCTIONS



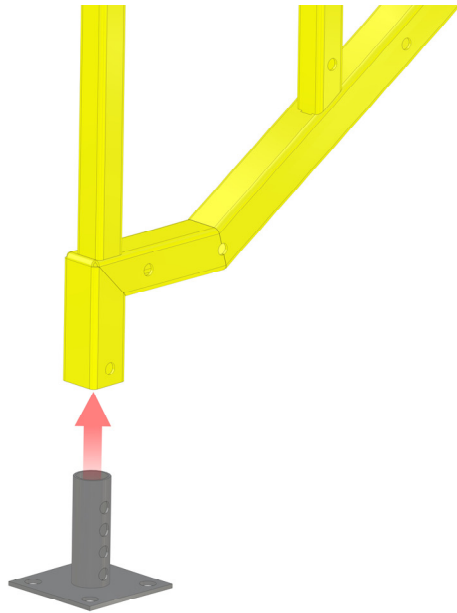
STEP 8: Orient step kick plate to step as shown.

STEP 9: Attached hardware as shown and tighten hardware.
Repeat for all remaining steps.

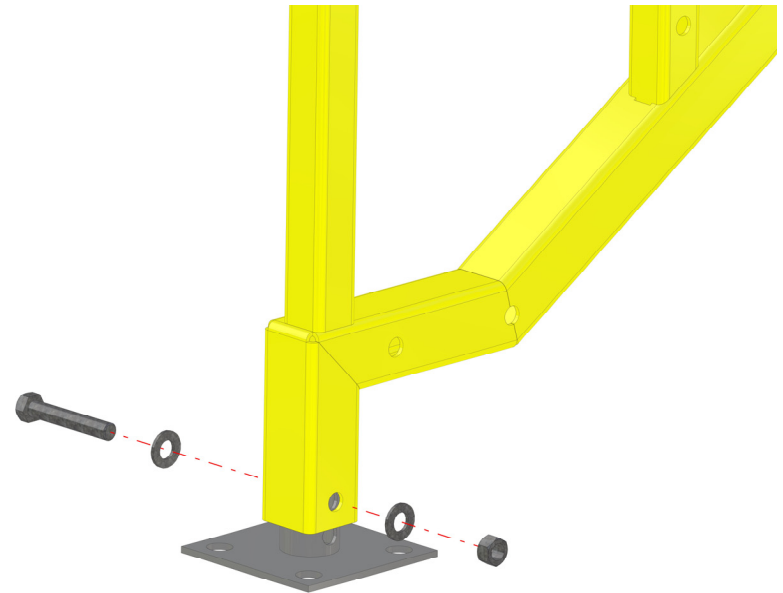


NOTE: Top step of stairs will not use kick plate.

STAIR STRINGER INSTRUCTIONS



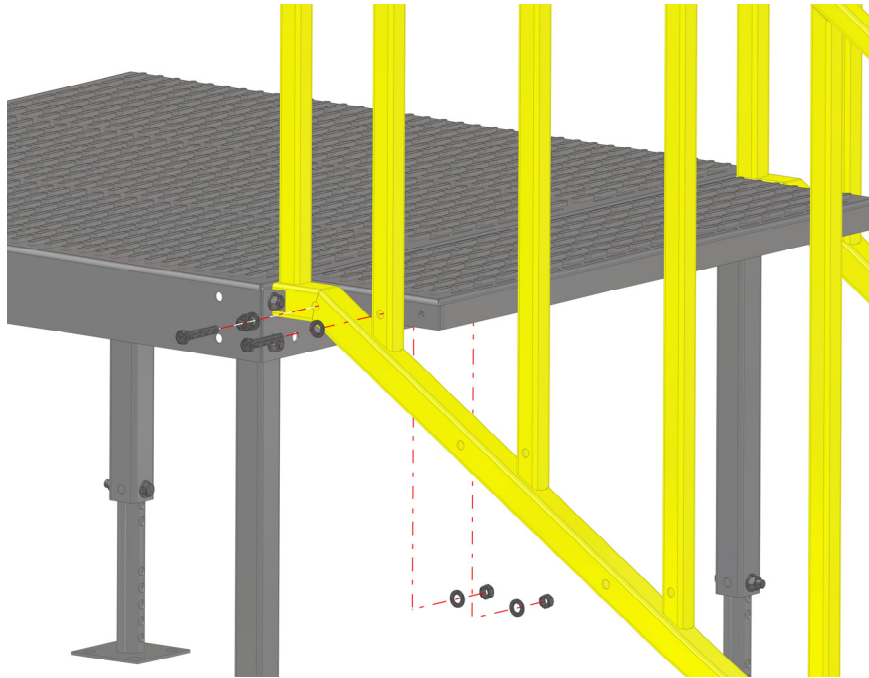
STEP 10: Slide stair foot into stair stringers as shown.



STEP 11: Attached hardware as shown and tighten hardware.

Stair Foot has four holes.
Second hole from the base plate is starting position.
Adjust up or down as needed based on ground conditions.

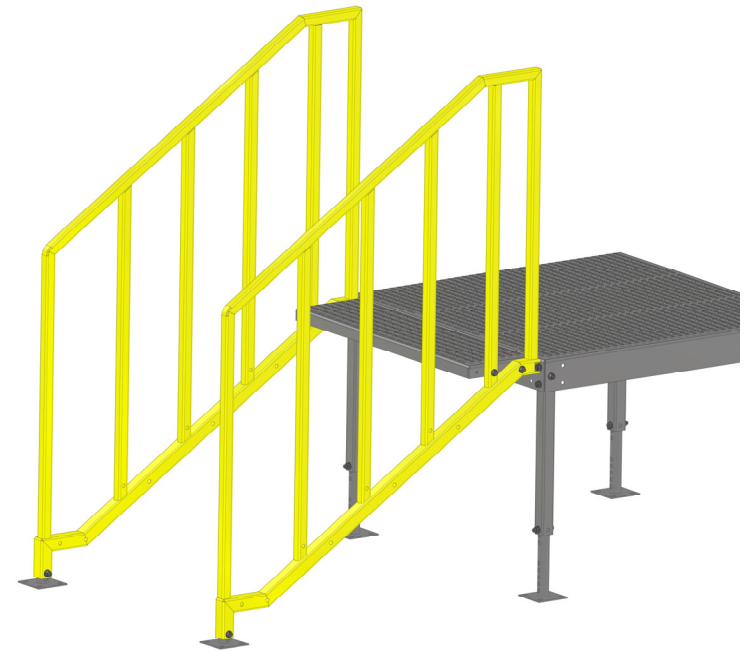
STAIR STRINGER INSTRUCTIONS



STEP 12: Position stringer next to upper step as shown.

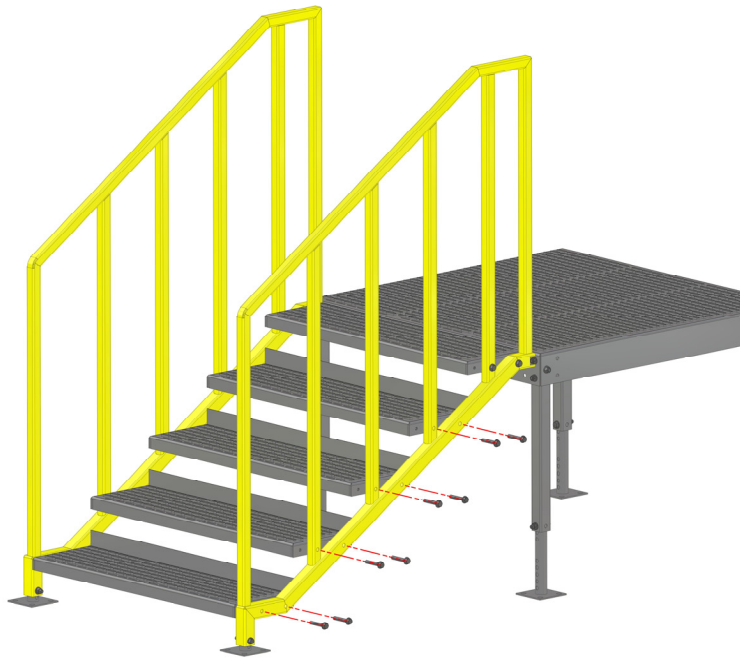
NOTE: Stringer grab rail should be oriented towards step.

STEP 13: Attached hardware with head of bolt oriented to the outside of the stringer. Start nut on bolt, but leave loose.



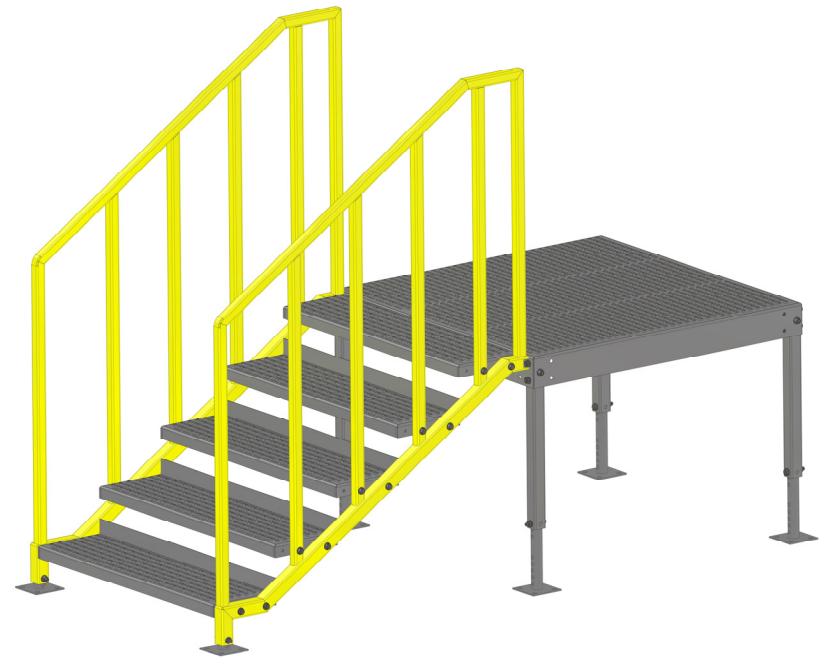
Repeat Steps 12 and 13 for each stringer.

STAIR STRINGER INSTRUCTIONS



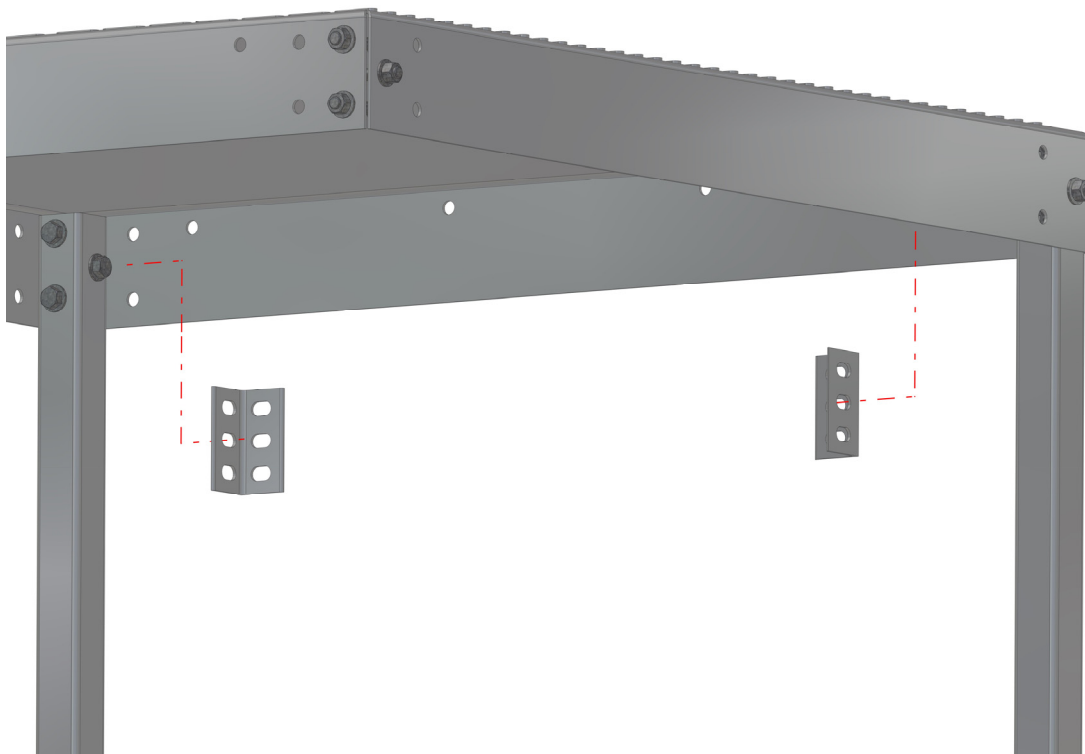
STEP 14: Position all other steps with attached kick plates to stringer as shown.

STEP 15: Attach hardware with head of bolt oriented to the outside of the stringer. Start nut on bolt, but leave loose.



STEP 16: Once all steps are located between stringers, securely tighten all steps to stringer hardware.

HANDRAIL MOUNT ANGLES INSTRUCTIONS



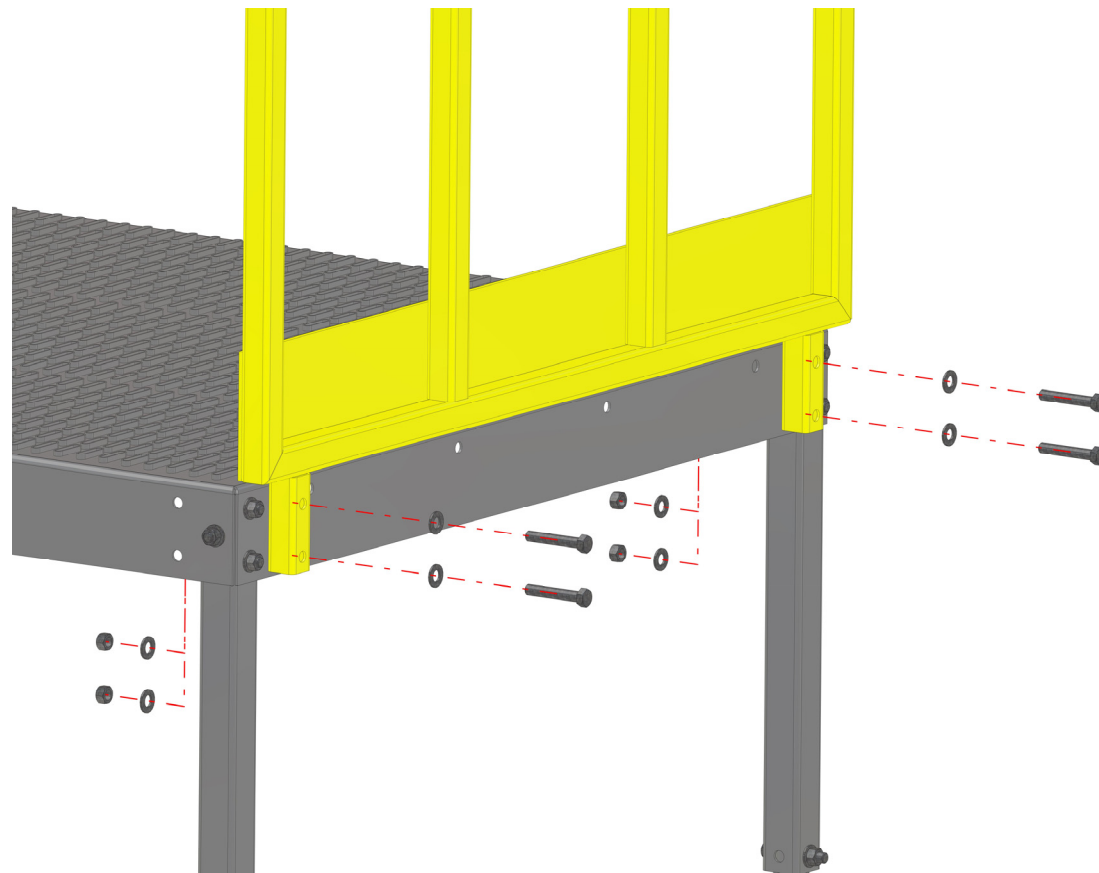
STEP 17: Attach the handrail mount angles to the support tubes. Orient one leg against the support tube and the other against the inside wall of the platform to which the handrail is to be attached.

NOTE: Use the bolts that connect the support to the platform.



WARNING! Handrail Mount Angle must be used at this connection. Failure to use Handrail Mount Angle may cause equipment to fail and may result in death or serious personal injury.

HANDRAIL INSTRUCTIONS



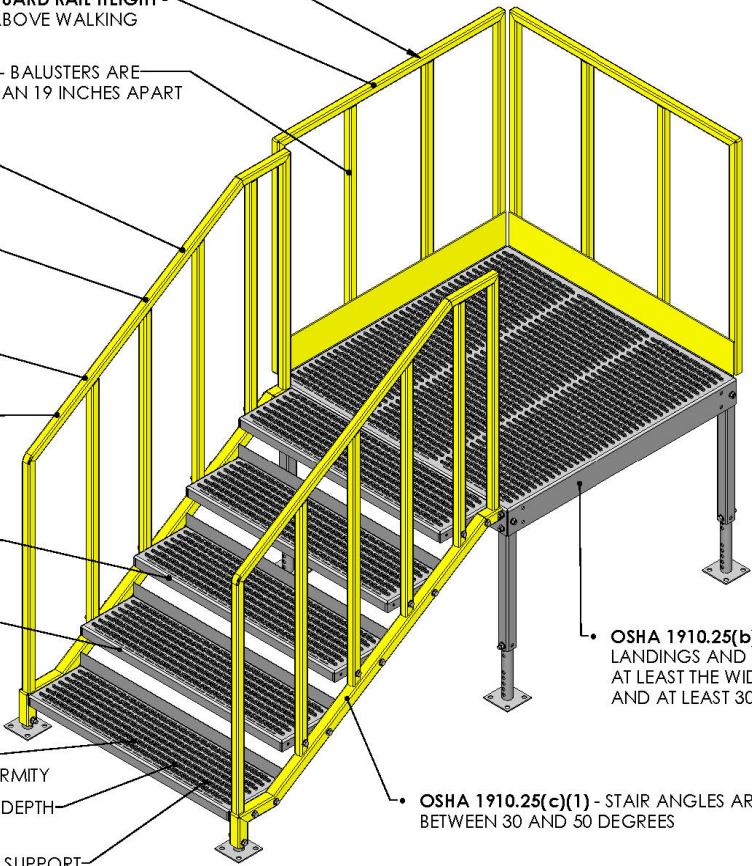
STEP 18: Position handrail and attach hardware as shown. Tighten hardware.

NOTE: Bolts connecting handrail to platform must go through handrail, platform wall and handrail mount angle.



WARNING! Handrail Mount Angle must be used to attach a handrail to a platform. Failure to use Handrail Mount Angle may cause equipment to fail and may result in death or serious personal injury.

OSHA COMPLIANCES

- 
- **OSHA 1910.28(b)(3)(i)** - IF A PLATFORM IS 4 FEET HIGH A GUARDRAIL IS REQUIRED
 - **OSHA 1910.29(b)(1)** - GUARD RAIL HEIGHT - GUARDS SHALL BE 42" ABOVE WALKING SURFACE .
 - **OSHA 1910.29(b)(2)(iii)** - BALUSTERS ARE INSTALLED NO MORE THAN 19 INCHES APART
 - **OSHA 1910.29(f)(4)** - NO OPENING IN A STAIR RAIL SYSTEM EXCEEDS 19 INCHES AT IT'S LEAST DIMENSION
 - **OSHA 1910.29(b)(3)** - GUARDRAIL SYSTEMS ARE CAPABLE OF WITHSTANDING, WITHOUT FAILURE, A FORCE OF 200 LBS IN ANY DIRECTION
 - **OSHA 1910.29(b)(6)** - GUARDRAIL SYSTEMS SHALL BE SMOOTH-SURFACED TO PREVENT INJURY
 - **OSHA 1910.28(b)(11)(ii)** - A GUARDRAIL IS REQUIRED IF A STAIR EXTENDS HIGHER THAN 4 RISERS/ OR 3 TREADS.
 - **OSHA 1910.25(b)(3)** - STAIRS HAVE UNIFORM RISER HEIGHTS AND TREAD DEPTHS BETWEEN LANDINGS
 - **OSHA 1910.25(c)(2)** - MAXIMUM RISER HEIGHT TO BE 9.5 INCHES (OURS ARE 7 INCHES)
 - **OSHA 1910.25(b)(3)** - COMPLIES WITH TOLERANCE FOR RISE AND RUN UNIFORMITY
 - **OSHA 1910.25(c)(3)** - MINIMUM TREAD DEPTH OF 9.5 INCHES (OURS ARE 11 INCHES)
 - **OSHA 1910.25(b)(6)** - EACH STAIR CAN SUPPORT AT LEAST FIVE TIMES THE NORMAL ANTICIPATED LIVE LOAD, BUT NEVER LESS THAN 1,000 LBS
 - **OSHA 1910.25(c)(1)** - STAIR ANGLES ARE TO BE BETWEEN 30 AND 50 DEGREES
 - **OSHA 1910.25(b)(4)** - STAIRWAY LANDINGS AND PLATFORMS ARE AT LEAST THE WIDTH OF THE STAIR AND AT LEAST 30 INCHES